

## Fühler

## Abmessungen

## Elektrische Anschlüsse

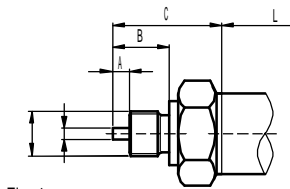


Fig. 1

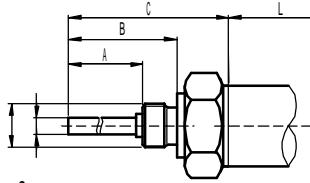


Fig. 2

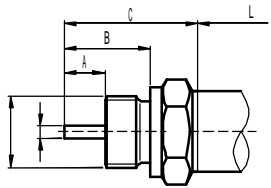


Fig. 3

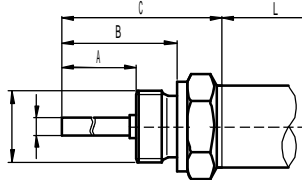


Fig. 4

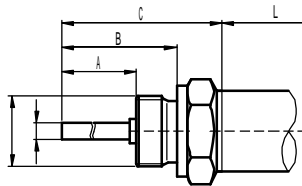


Fig. 5

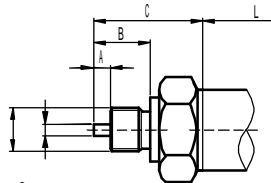
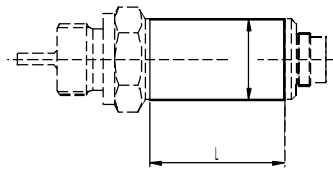


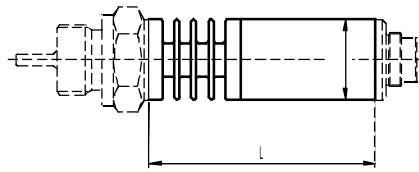
Fig. 6

Variante für Mediumtemperatur bis 100°C



L = 40 mm für Stecker DIN 43650 (Fig. 10)  
L = 45 mm für alle anderen Varianten

Variante für Mediumtemperatur >100°C bis max. 150°C



L = 67 mm für Stecker DIN 43650 (Fig. 10)  
L = 72 mm für alle anderen Varianten

Fühler	A	B	C	Ø-F (Fühler)	Ø-G (Gewinde)
Fig. 1	5	17	32.5	3.5	G 1/4 A
Fig. 2	22	32	47.5	5	G 1/4 A
Fig. 3	12	25.5	39.5	3.5	G 1/2 A
Fig. 4	88	100	113.5	5	G 1/2 A
Fig. 5	188	200	213.5	5	G 1/2 A
Fig. 6	5	17	32.5	3.5	M 10

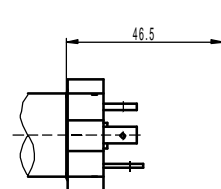


Fig. 10

Pin	2-Leiter	3-Leiter	4-Leiter
1	+Vin	+Vin	+Vin
2	Tout	Tout	+Tout
3		GND	GND
⊥			-Tout

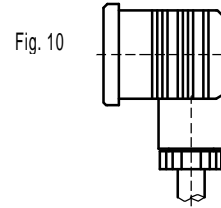


Fig. 11

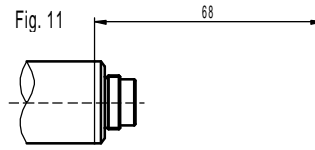
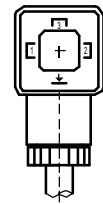
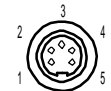


Fig. 12

Ansicht auf  
Kabelbuchse



Pin	2-Leiter	3-Leiter	4-Leiter
1			+Vin
2	Tout	Tout	+Tout
3	+Vin	+Vin	-Tout
4		GND	GND

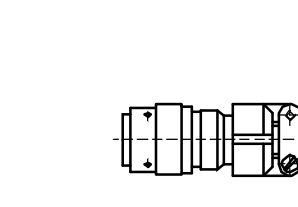
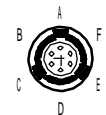


Fig. 13

Ansicht auf  
Kabelbuchse



Pin	2-Leiter	3-Leiter	4-Leiter
A	+Vin	+Vin	+Vin
B		GND	GND C
D	Tout	Tout	+Tout
E			-Tout

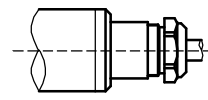


Fig. 14

Farbe	2-Leiter	3-Leiter	4-Leiter
weiss	+Vin	+Vin	+Vin
grün	Tout	Tout	-Tout
gelb		GND	GND
braun			+Tout

Technische Änderungen vorbehalten. Stand 06/01

**DL-SYSTEME GMBH**  
DÜRERWEG 15  
73614 SCHORNDORF

TEL: (0 71 81) 7 79 50  
FAX (0 71 81) 4 28 26

e-mail: info@dl-systeme.de  
internet: www.dl-systeme.de



DL-SYSTEME FÜR MESSTECHNIK GMBH